

X
X
X
X
X
X
X
X
X
X
X
X
X

STARLING EDITION



XXXXXXXXXXXXXXXXXXXXXXXXXXXX



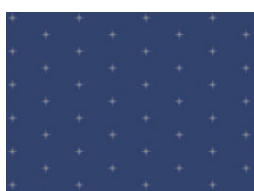
POSSIBILITIES

STARLING EDITION

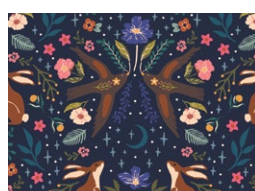
QUILT DESIGNED BY AGFstudio



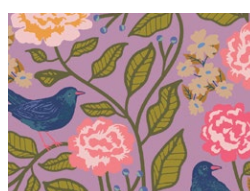
FABRICS DESIGNED BY MAUREEN CRACKNELL



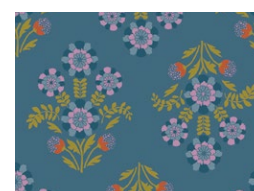
Fabric A
STR88901
SHINING STARDUSK



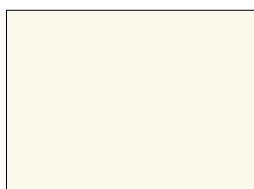
Fabric B
STR88903
MOONLIT FOREST DUSK



Fabric C
STR88906
BLACKBIRD CANOPY



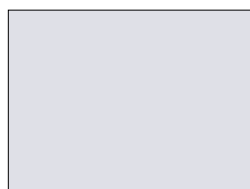
Fabric D
STR88914
BRAMBLEBLOOM BLUE



Fabric E
PE-408
WHITE LINEN



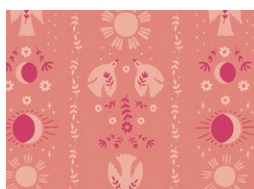
Fabric F
STR88915
BLOOM PLUME



Fabric G
PE-566
DAYBREAK



Fabric H
STR88912
SHINING STARDAWN



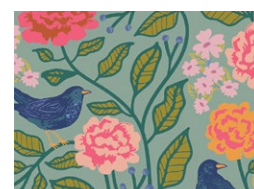
Fabric I
STR88908
ASCENDENCE SHIMMER



Fabric J
STR88913
MOONLIT FOREST DAWN



Fabric K (Binding)
BINSTR88
STARLIT BOUND



Backing
STR88900
BLACKBIRD AVIARY



POSSIBILITIES

STARLING EDITION

FINISHED SIZE | 68½" x 79½"

FABRIC REQUIREMENTS

Fabric A	STR88901	¾ yd.
Fabric B	STR88903	¾ yd.
Fabric C	STR88906	1⅜ yd.
Fabric D	STR88914	⅝ yd.
Fabric E	PE408	3 yd.
Fabric F	STR88915	⅝ yd.
Fabric G	PE566	¼ yd.
Fabric H	STR88912	½ yd.
Fabric I	STR88908	⅜ yd.
Fabric J	STR88913	⅝ yd.
Fabric K	BINSTR88	⅝ yd.

BACKING FABRIC
STR88900 5 yds (Suggested)

BINDING FABRIC
Fabric **K** BINSTR88 ⅝ yd. (Included)

CUTTING DIRECTIONS

¼" seam allowances are included.
WOF means width of fabric.

Fabric A

- Cut 14 (fourteen) 2½" x 8½" strips.
- Cut 28 (twenty eight) 2½" x 6½" strips.

Fabric B

- Cut 14 (fourteen) 2½" x 8½" strips.
- Cut 14 (fourteen) 2½" x 6½" strips.

Fabric C

- Cut 5 (five) 4½" squares.
- Cut 22 (twenty two) 2½" x 8½" strips.
- Cut 24 (twenty four) 2½" x 6½" strips.
- Cut 10 (ten) 2½" x 4½" strips.
- Cut 28 (twenty eight) 1½" x 6½" strips.
- Cut 28 (twenty eight) 1½" x 2½" rectangles.

Fabric D

- Cut 17 (seventeen) 6½" squares.

Fabric E

- Cut 96 (ninety six) 3½" squares.
- Cut 24 (twenty four) 2½" x 16½" strips.
- Cut 24 (twenty four) 2½" x 12½" strips.
- Cut 10 (ten) 2½" x 8½" strips.
- Cut 10 (ten) 2½" x 4½" strips.
- Cut 28 (twenty eight) 1½" x 6½" strips.
- Cut 28 (twenty eight) 1½" x 2½" strips.

Fabric F

- Cut 14 (fourteen) 6½" squares.

Fabric G

- Cut 14 (fourteen) 2½" x 4½" strips.

Fabric H

- Cut 12 (twelve) 4½" x 6½" rectangles.
- Cut 6 (six) 2½" x 8½" strips.
- Cut 6 (six) 2½" x 4½" strips.

Fabric I

- Cut 10 (ten) 4½" squares.

Fabric J

- Cut 17 (seventeen) 6½" squares.

Fabric K

- Cut 8 (eight) 2½" x WOF" strips.(Binding)

CONSTRUCTION

Sew all rights sides together with $\frac{1}{4}$ " seam allowance.

Corner Square Triangle

- Take all $3\frac{1}{2}$ " squares from fabric **E** and with a fabric pen draw a diagonal line from one end to the other or you can use your iron to create the diagonal mark.
- Place one (1) $3\frac{1}{2}$ " square on opposite corners right sides together to a $6\frac{1}{2}$ " square from fabric **D** and sew on both diagonals.

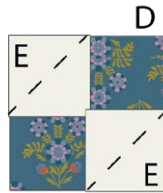


DIAGRAM 1

- Trim excess seam allowance to $\frac{1}{4}$ " and press.
- Repeat this process with all $6\frac{1}{2}$ " squares from Fabric **D**, **F**, and **J** and all $3\frac{1}{2}$ " squares from Fabric **E**.



DIAGRAM 2

Blocks 1-2 & 3:

- Sew the corner square units together following Block Diagram 4. Make five each of Block 1 and Block 2, and two of Block 3.
- Then, take two (2) $2\frac{1}{2}$ " x $12\frac{1}{2}$ " strips and two (2) $2\frac{1}{2}$ " x $16\frac{1}{2}$ " strips from Fabric **E**. Sew these border strips around all the blocks as shown in Diagram 3.

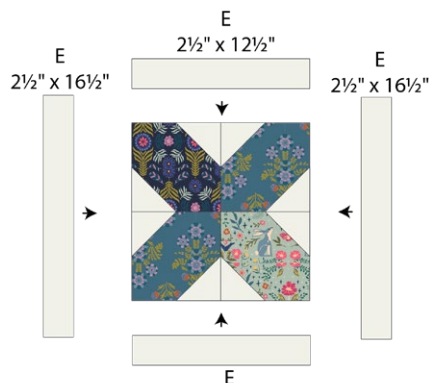


DIAGRAM 3

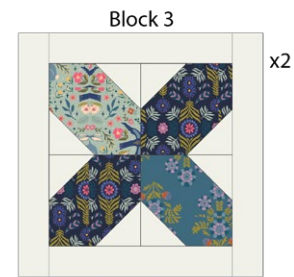
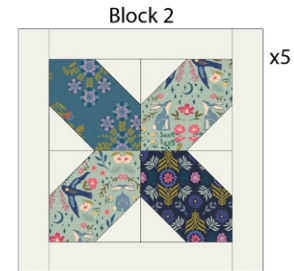
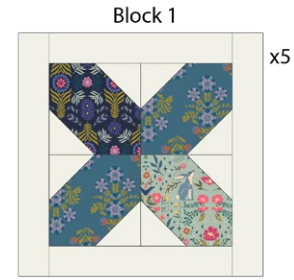


DIAGRAM 4

Blocks 4-5-6 & 7:

- To make the bordered square blocks take a $4\frac{1}{2}$ " square from fabric **I** and sew two (2) $2\frac{1}{2}$ " x $4\frac{1}{2}$ " and two (2) $2\frac{1}{2}$ " x $8\frac{1}{2}$ " border strips to the square.
- Repeat this process with your remaining $4\frac{1}{2}$ " squares from fabric **I** and **C** and your border strips from Fabric **C**, **E** and **H**.
- See diagram below for reference.

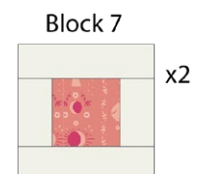
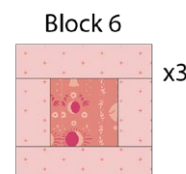
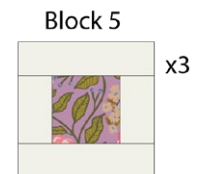
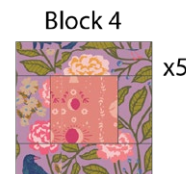


DIAGRAM 5

Block 8:

- Take 1 (one) $2\frac{1}{2}" \times 4\frac{1}{2}"$ rectangle from fabric **G** and sew 2 (two) $1\frac{1}{2}" \times 2\frac{1}{2}"$ and 2 (two) $1\frac{1}{2}" \times 6\frac{1}{2}"$ border strips from Fabric **C**.

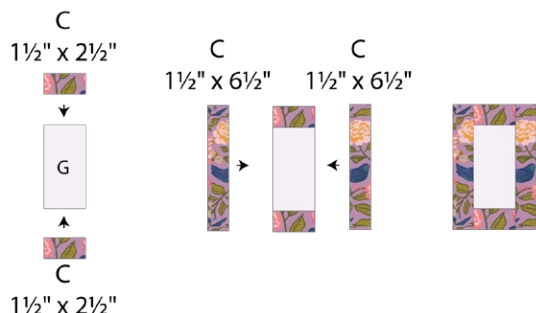


DIAGRAM 6

- Then sew 2 (two) $2\frac{1}{2}" \times 6\frac{1}{2}"$ strips from fabric **B** and 1 (one) $2\frac{1}{2}" \times 8\frac{1}{2}"$ strip from fabric **B**.
- Make a total of fourteen (14) Block 8 units.

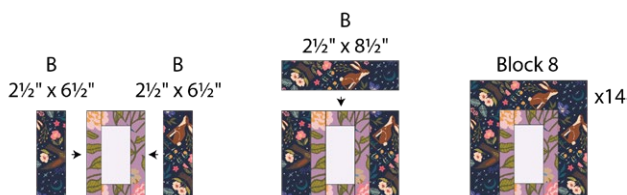


DIAGRAM 7

Block 9:

- Repeat the same process as for Block 8, using 1 (one) $2\frac{1}{2}" \times 4\frac{1}{2}"$ rectangle from Fabric **C**; 2 (two) $1\frac{1}{2}" \times 2\frac{1}{2}"$ and 2 (two) $1\frac{1}{2}" \times 6\frac{1}{2}"$ border strips from Fabric **E**; 2 (two) $2\frac{1}{2}" \times 6\frac{1}{2}"$ strips from Fabric **A**; and 1 (one) $2\frac{1}{2}" \times 8\frac{1}{2}"$ strip from Fabric **A**.
- Make a total of fourteen (14) Block 9 units.

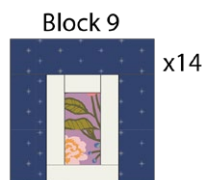


DIAGRAM 8

Block 10:

- Take one (1) $4\frac{1}{2}" \times 6\frac{1}{2}"$ rectangle from fabric **H** and sew two (2) $2\frac{1}{2}" \times 6\frac{1}{2}"$ and one (1) $2\frac{1}{2}" \times 8\frac{1}{2}"$ border pieces to get a piece that looks like the diagram.
- Make a total of (12) twelve of block 10.

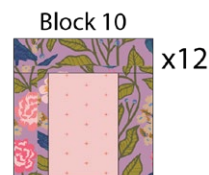


DIAGRAM 9

QUILT TOP ASSEMBLING

- This quilt is made up of 9 rows. Begin assembling each row, making sure to rotate the blocks as needed.
- Follow the diagrams for correct block placement and attachment.

Row 1:

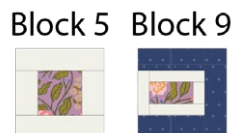


DIAGRAM 10

Row 2:

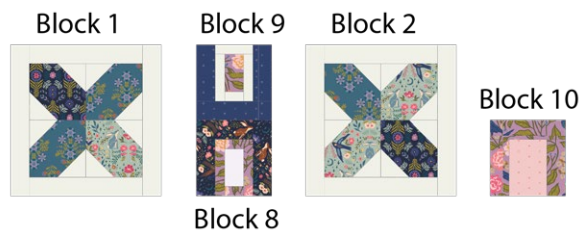


DIAGRAM 11

Row 3:

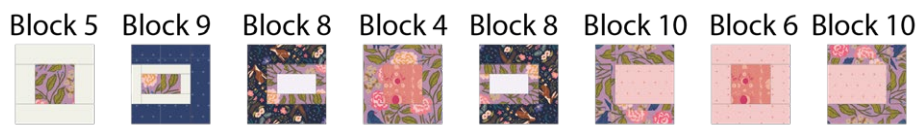


DIAGRAM 12

Row 4:



DIAGRAM 13

Row 5:



DIAGRAM 14

Row 6:



DIAGRAM 15

Row 7:



DIAGRAM 16

Row 8:



DIAGRAM 17

Row 9:



DIAGRAM 18

QUILT TOP

- To assemble the quilt top, sew each row with right sides together, centering each row as shown in the diagram below.

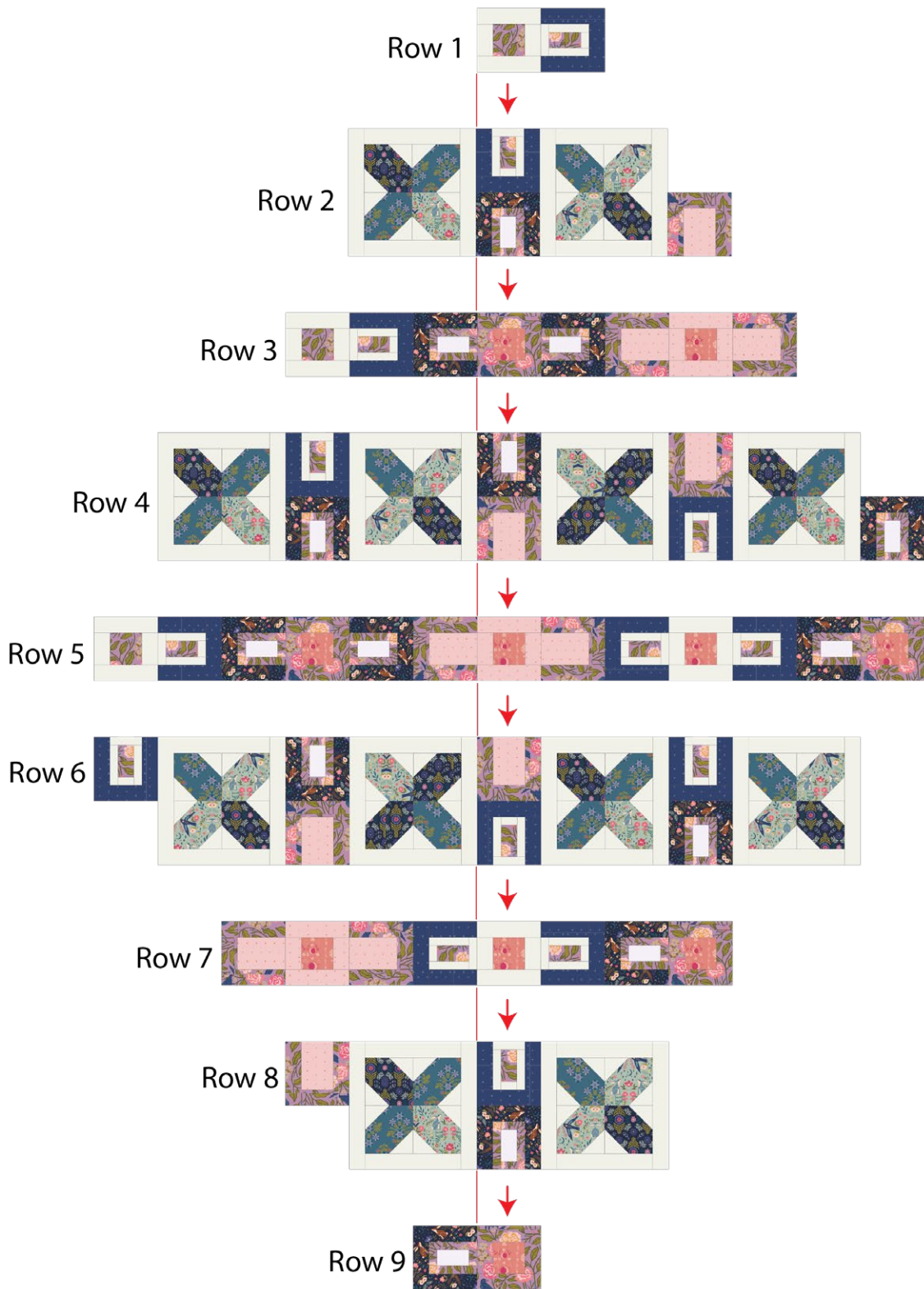


DIAGRAM 19

- Rotate the quilt top as needed and trim it to measure 68½" x 79½".

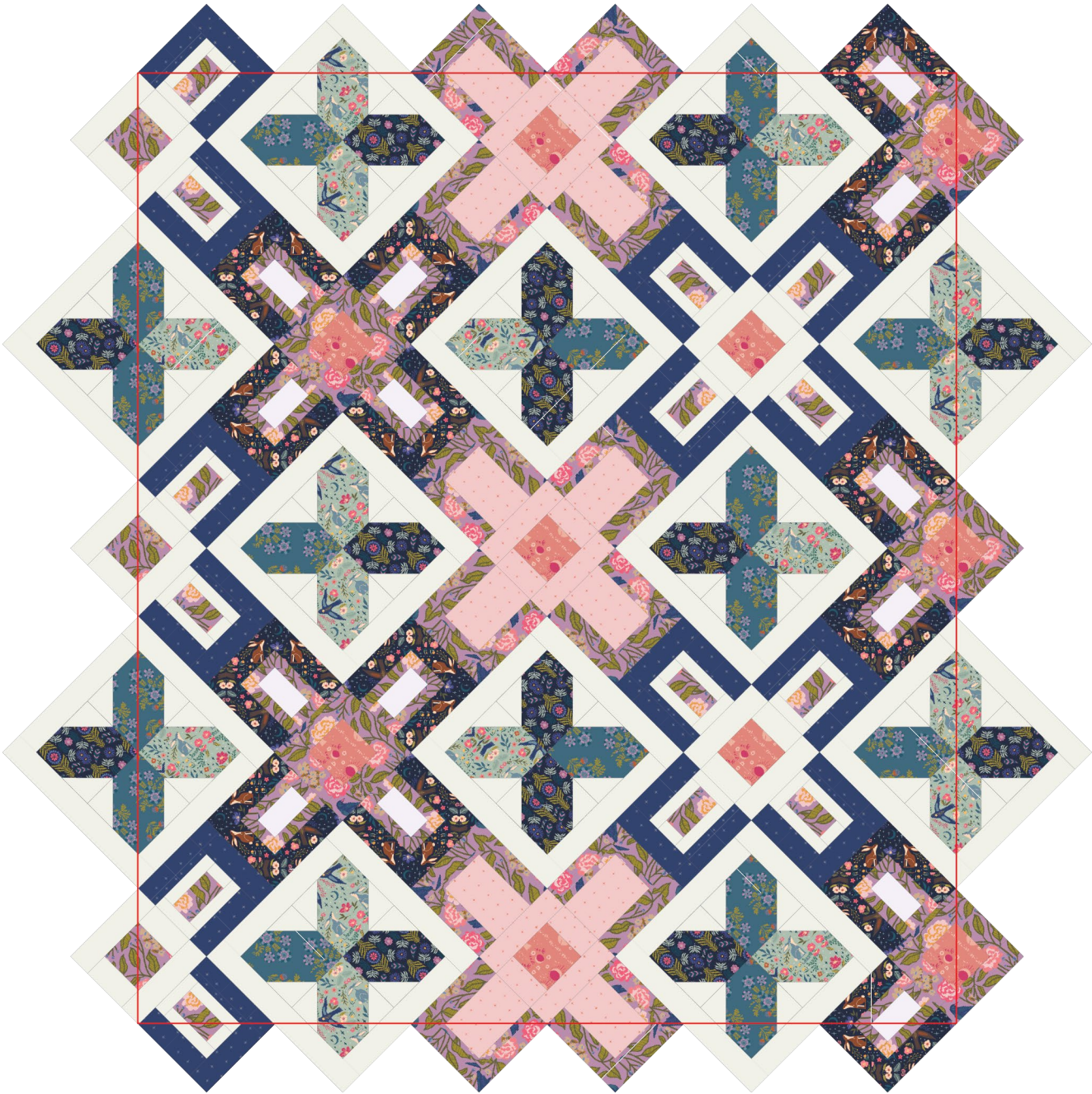


DIAGRAM 20

QUILT ASSEMBLY

Sew rights sides together.

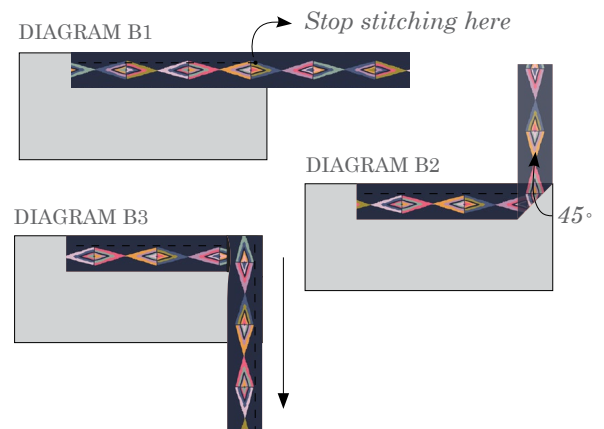
- Place BACKING FABRIC on a large surface wrong side up. Stretch it with masking tape against that surface.
- Place BATTING on top of backing fabric.
- Place TOP on top of the batting with right side facing up. Smooth away wrinkles using your hands.
- Pin all layers together and baste with basting thread, using long stitches. You can also use safety pins to join the layers.
- Machine or hand quilt starting at the center and working towards the corners. Remember that quilting motifs are a matter of personal preference. Have fun choosing yours!
- After you finished, trim excess of any fabric or batting, squaring the quilt to proceed to bind it.

BINDING

Sew rights sides together.

- Cut enough strips $2\frac{1}{2}$ " wide by the width of the fabric **K** to make a final strip 204" long. Start sewing the binding strip in the middle of one of the sides of the quilt, placing the strip right side down and leaving an approximated 5" tail. Sew with $\frac{1}{4}$ " seam allowance (using straight stitch), aligning the strip's raw edge with the quilt top's raw edge.
- Stop stitching $\frac{1}{4}$ " before the edge of the quilt (DIAGRAM B 1). Clip the threads. Remove the quilt from under the machine presser foot. Fold the strip in a motion of 45° and upward, pressing with your fingers (DIAGRAM B 2). Hold this fold with your finger, bring the strip down in line with the next edge, making a horizontal fold that aligns with the top edge of the quilt (DIAGRAM B 3). Start sewing at $\frac{1}{4}$ " of the border, stitching all the layers. Do the same in the four corners of the quilt.

- Stop stitching before you reach the last 5 or 6 inches. Cut the threads and remove the quilt from under the machine presser foot. Lay the loose ends of the binding flat along the quilt edge, folding the ends back on themselves where they meet. Press them together to form a crease. Using this crease as the stitching line, sew the two open ends of the binding with right sides together (you can help yourself marking with a pencil if the crease is difficult to see).
- Trim seam to $\frac{1}{4}$ " and press open. Complete the sewing. Turn binding to back of the quilt, turn raw edge inside and stitch by hand using blind stitch.
- If you are using our 2.5 edition (binding fabric), click or scan this QR code to see a tutorial on how to use this specialty fabric.



XXXXXXXXXXXXXXXXXXXXXXXXXXXXXXXXXXXX

Congratulations
& enjoy

XXXXXXXXXXXXXXXXXXXXXXXXXXXXXXXXXXXX



artgalleryfabrics.com

NOTE: While all possible care has been taken to ensure the accuracy of this pattern, We are not responsible for printing errors or the way in which individual work varies.

Please read instructions carefully before starting the construction of this quilt. If desired, wash and iron your fabrics before starting to cut.